



Rainfall Performance

After an exceptionally wet December, January 2026 was notably drier for the country with the exception of the northeastern half and isolated areas over eastern Hardap region. January 2026 was the 8th January driest since 1981 for Namibia.

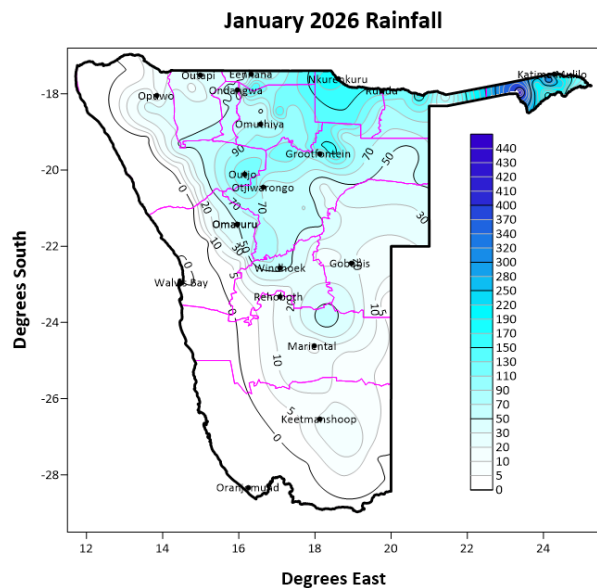


Figure 1: Cumulative rainfall (mm) – January 2026

The highest rainfall was recorded sporadically over the Zambezi region (as seen in Figure 1). The highest monthly rainfall amounts were recorded at Sachona 442.9mm, Kasheshe 338.0mm, Katima Mulilo ADC 311.0mm, Bukalo 227.5mm and Katima Mulilo Airport 224.4mm. Stations from other regions received rainfall less than 200mm.

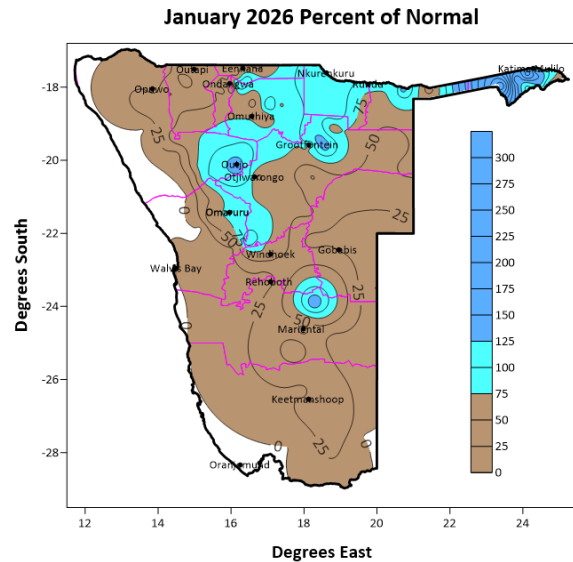


Figure 2: January 2026 percent of normal rainfall

Figure 2 depicts the percentage of normal rainfall received in January 2026, where below-average rainfall (shown in brown) was observed over the bulk of the country. Zambezi, Kavango-West, the bulk of Oshikoto, parts of Kunene and Otjozondjupa regions recorded normal rainfall. Furthermore, **Table 1** presents the monthly rainfall performance as recorded at selected stations and towns for which data were available.

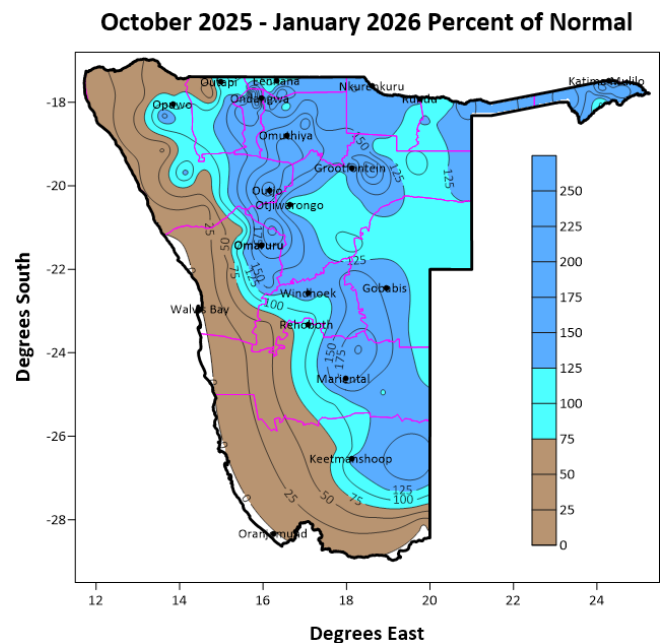


Figure 3: October 2025 to January 2026 percent of normal rainfall



On a seasonal scale (October to January 2026 in Figure 3), the north-eastern regions, central north extending southwards into the south-eastern parts of the country recorded above-normal rainfall (color blue in Fig 3). In contrast, below-normal rainfall (color brown in Fig 3) was observed along the coast and south-western parts of the country. The poor performance of rainfall in January 2026, has reduced the accumulated rainfall amounts for the season from October 2025 to January 2026.

Temperature Performance - January 2026

The highest temperatures above 28°C were concentrated in the southeastern parts of Namibia. The western escarpment area showed relatively cooler temperatures below 24°C, which can be attributed to the synoptic system interactions during the month. However, the cooling over western Otjozondjupa and central Zambezi regions was due to continuous rainfall during January 2026.

In short January 2026 was characterized by predominantly below-normal temperatures over central and north-western Namibia, associated with enhanced cloud cover and active rainfall conditions. In contrast, parts of south-central to south-eastern Namibia experienced significantly above-normal temperatures, indicative of reduced rainfall activity and increased heat stress conditions.

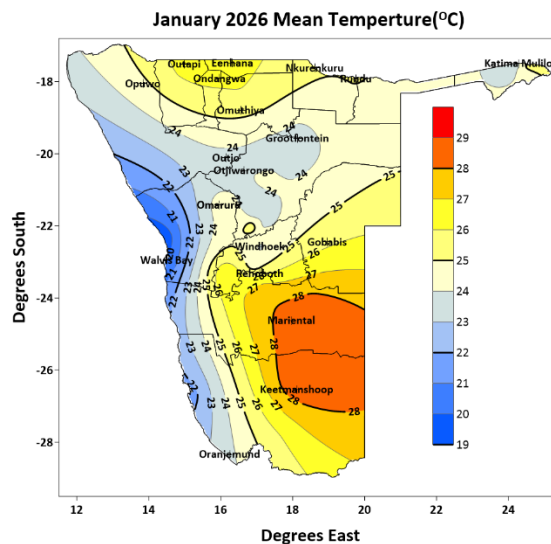


Figure 4: Mean Temperature (°C) – January 2026

The far north and southern regions show the above-normal temperature anomalies for the month of January 2026.

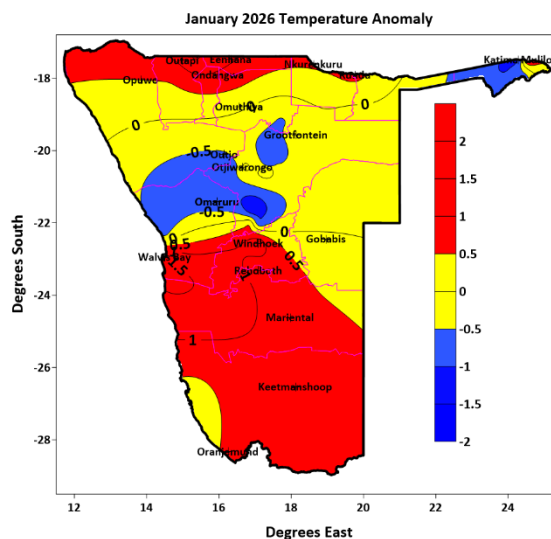


Figure 5: Mean Temperature Anomalies (°C) - January 2026

Temperature Prediction for March to May 2026

According to NOAA, La Nina persisted during January 2026 with a -0.9°C temperature anomaly over the Nino3.4 region. A transition from LA Nina to ENSO neutral is expected in February - April 2026 with a 60% chance.



The probabilistic temperature outlook for April-June 2026 indicates a high likelihood of above-normal temperatures (color red in Fig 6) over most parts of the country. In contrast, Kunene, Omusati, Erongo, Khomas, parts of Hardap, western Otjozondjupa and eastern Kharas are expected to experience normal temperature condition.

The predicted average temperatures for April to June 2026 indicate that much of the country will receive average temperatures below 2°C, over the central and southern Namibia (see figure 7). However, average temperatures above 20 °C are favored over the northern regions and along the western escarpment.

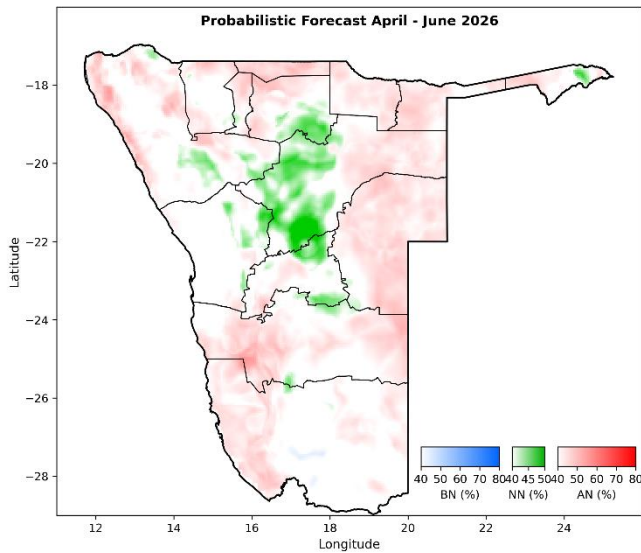


Figure 6: Average Temperature Projection (%): April - June 2026

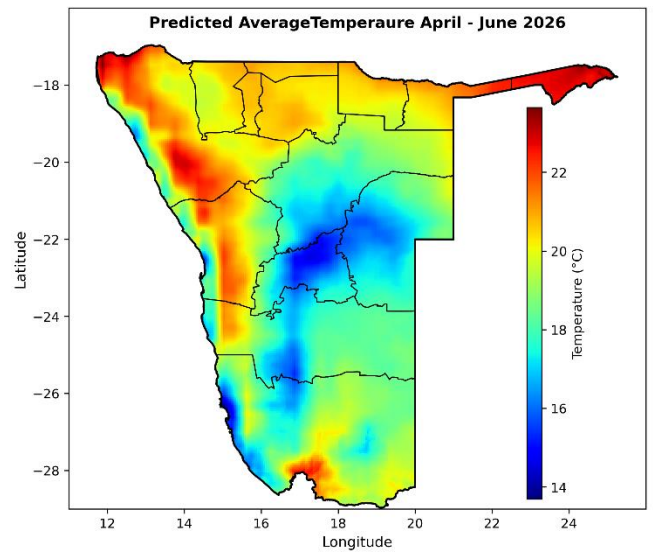


Figure 7: Deterministic Temperature Forecast for April - June 2026



Progressive Performance

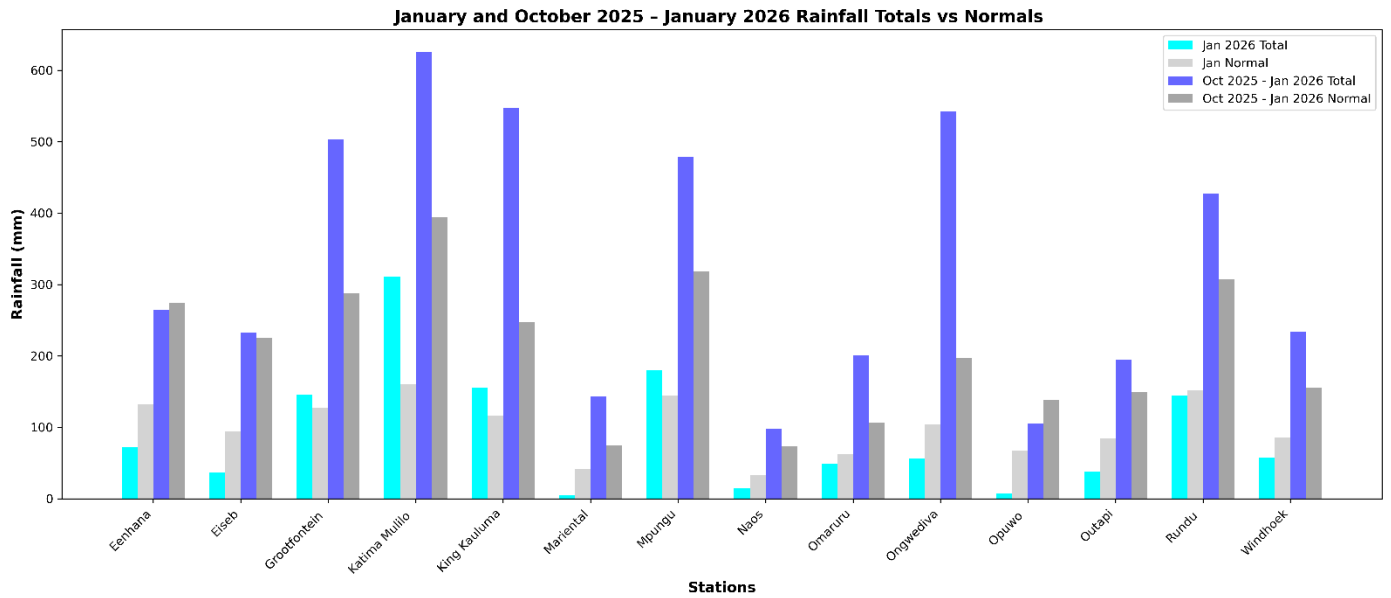


Figure 10: Rainfall Progressive Chart: January 2026

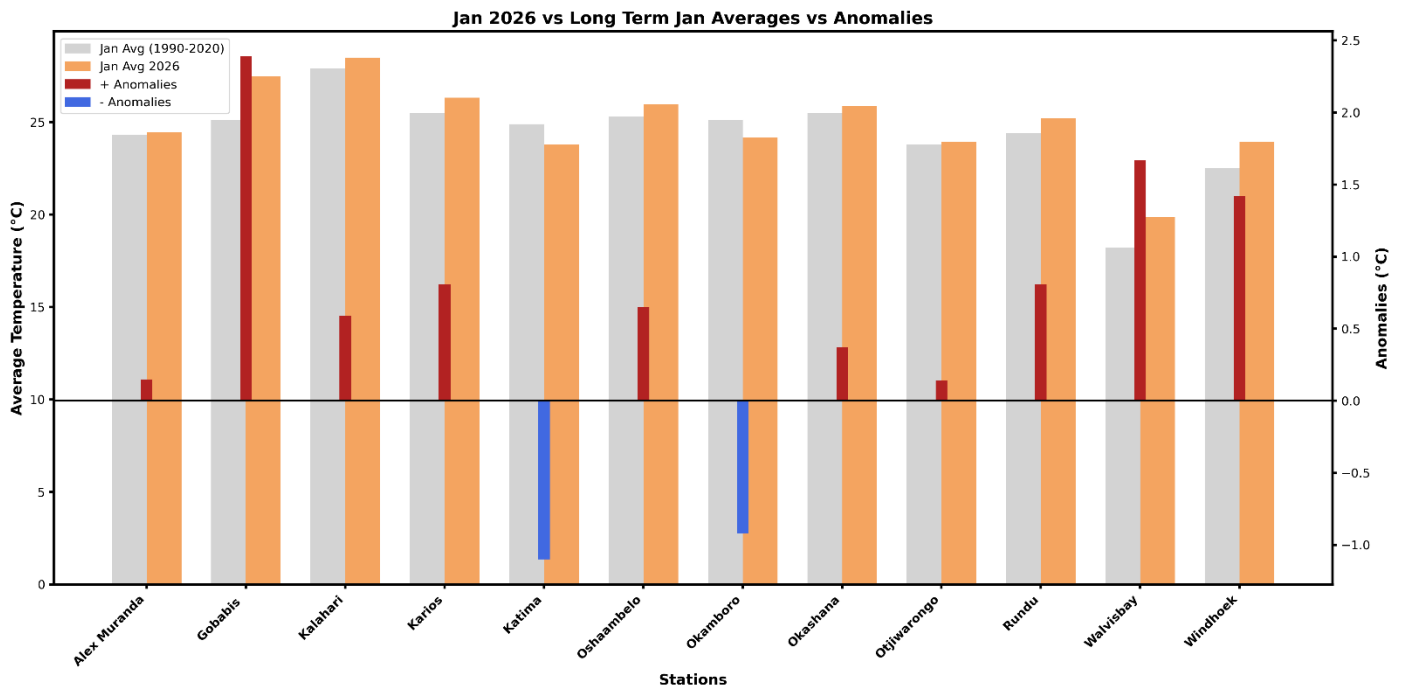


Figure 11: Temperature Progressive Chart: January 2026



Table 2: Namibia Rainfall Performance at Specific Places – December 2025

Station	01-10 Jan 2026	11-20 Jan 2026	21-31 Jan 2026	Highest Daily Falls (mm)	Month Total (mm)	Normal (mm)	Departure (%)	Oct 2025 –January 2026 Relative Performance		
								Total (mm)	Normal (mm)	Departure (%)
Endundja	22	0	11	22	33	125	-74	233.5	253	-8
Ongha	23.1	15.5	18	18	56.6	143	-60	355.6	300	19
Okalongo	0	0	34	22	34	97	-65	191	199	-4
Okangwati	0	0	0	0	0	58	-100	64.5	107	-40
Oshifo	8.8	18.5	0	18.5	27.3	103	-73	146.3	192	-24
Ongenga	4.5	28	0	28	32.5	109	-70	264	223	18
Onawa	0	32	7.5	32	39.5	89	-56	171.9	171	1
Eenhana	6	28.8	38	20.5	72.8	132	-45	264.9	274	-3
Katima Mulilo Airport	35.5	105	83.9	74.4	224.4	149	51	471.4	354	33
Katima Mulilo ADC	50	189	72	50	311	160	94	626	395	58
Caprivi river Lodge	6	75	91	38	172	160	8	469.5	387	21
Outapi	16.2	12.2	10	16.2	38.4	85	-55	194.9	149	31
NBS Future L Academy		0	6	19	43.5	101	-57	255.3	220	16
Omauni	19	55	70	38	144	149	-3	472	318	48
Onesi	0	3.5	0	3.5	3.5	94	-96	64	187	-66
Kasheshe	53	253	32	90	338	154	119	863	375	130
Mpungu	17	107	56	55	180	145	24	479.5	318	51
Kahenge	6	28	72	24	106	156	-32	401	326	23
Bukalo	65	83.5	79	41	227.5	156	46	726.6	367	98
Ongula ya Netanga	0	0	50	36	50	115	-57	230	228	1
Sibinda	36	47.5	111.5	55	195	149	31	550.9	379	45
Epembe	0.5	45	100	40	145.5	126	15	516.9	254	104
Oshigambo	7	22	65.8	39	94.8	106	-11	310.6	207	50
Ongwediva	15	0	41	41	56	104	-46	543	197	176
Uukwangula	0	0	38.2	28	38.2	102	-63	222.4	198	12
Okaku	10.5	10	27.5	18.5	48	106	-55	282.9	203	39
Oshaambelo	2.3	9.2	2.3	9.2	13.8	52	-73	77.4	201	-61
Etanga	5	0	0	5	5	35	-86	27.5	77	-64
Okahao	0	11	18	13	29	91	-68	243.5	195	25
Kaisosi	0	91.5	61.5	38	153	164	-7	388.8	313	24
Ompundja	14.6	18.5	49.3	22.2	82.4	105	-22	427.6	201	113
Rundu	0	94	50.5	31	144.5	152.1	-5	427.2	307.4	39
Ondangwa DVS	31	4	30	20	65	108	-40	298	203	47
Eheke	10.6	4.8	52.1	23.5	67.5	104	-35	398.4	192	108
Onayena	0	39	108	45	147	113	30	415	222	87



Station	01-10 Jan 2026	11-20 Jan 2026	21-31 Jan 2026	Highest Daily Falls (mm)	Month Total (mm)	Normal (mm)	Departure (%)	Oct 2025 – January 2026 Relative Performance		
								Total (mm)	Normal (mm)	Departure (%)
Rundu Airport	0.2	32.2	2.2	13.4	34.6	159	-78	152	307	-50
Sachona	11.7	359.8	71.4	85	442.9	136	226	719.8	375	92
Chichimane	0	70.3	58	40	128.3	151	-15	325.2	354	-8
Ndonga-Linena	15	47.5	46	40	108.5	137	-21	299.5	294	2
Olukonda	0	0	46.9	25	0	110	-100	259.9	201	29
Enguwantale	0	0	27.8	14	27.8	100	-72	369	202	83
Uukwiyu Uushona	3.7	19	39	20	61.7	107	-42	492.2	195	152
Ndiyona	47.2	52.6	82.1	47.2	181.9	131	39	498	289	72
Mukwe	7	18	26	11	51	138	-63	399	303	32
Okatyali	0	0	51	51	51	106	-52	276	196	41
Opuwo ADC	7	0	0	7	7	67	-90	105.8	138	-23
Onyuulaye	0	0	91.5	60	91.5	122	-25	246.5	243	1
Omakange	23	0	22	23	45	86	-48	190	168	13
Engombe	14.5	10	33.5	18	58	96	-40	331.5	182	82
Okani	0	10	21.7	15.7	31.7	96	-67	349.8	182	92
Hamoye	0	27	75.5	52	102.5	80	28	322.1	298	8
Kaoko-Otavi	30.1	0	7.4	17.8	37.5	73	-49	228.8	141	62
Ncaute	0	23	58.8	31	81.8	143	-43	372.4	287	30
Okapyia	2.2	46.7	42.5	36	91.4	129	-29	354.3	272	30
King Kauluma	14.1	9.6	132.4	55.5	156.1	117	33	546.9	247	121
Mururani	0	61	81.5	40	142.5	122	17	363	267	36
Namutoni	11.9	22.1	30.1	14	64.1	119	-46	439.8	236	86
Halali	22.4	0	67	32.5	89.4	101	-11	438.5	204	115
Wilde	4	39.5	24	32	67.5	119	-43	236.5	253	-7
Sesfontein	0	0	0	0	0	21	-100	9	41	-78
Mannheim	7.3	55.2	40.5	24	103	80	29	442.8	259	71
Okaukuejo	16	0	55.8	18.5	71.8	82	-12	258.6	163	59
Galton Gate	0	52	6.6	50	58.6	78	-25	121.4	142	-15
Anderson Gate	15.6	12	50.1	20.1	77.7	96	-19	281.5	185	52
Grootfontein Town	28.4	42.3	75.1	26.4	145.8	128	14	503.9	288	75
Gaikos	12.5	77	84	32	173.5	123	41	542	269	101
Huttenhof	19	19	87	35	125	134	-7	536.5	275	95
Grootfontein	31.5	32.5	66.1	27.5	130.1	129	1	445.1	284	57
Grootfontein Airport	21.6	52.2	17.6	25.8	91.4	131	-30	333.3	286	17
Tsumkwe	0	18	20	10	38	121	-69	326	254	28
Otjituuo	0	55.5	90	33.5	145.5	103	41	512.9	222	131



Station	01-10 Jan 2026	11-20 Jan 2026	21-31 Jan 2026	Highest Daily Falls (mm)	Month Total (mm)	Normal (mm)	Departure (%)	Oct 2025 –January 2026 Relative Performance		
								Total (mm)	Normal (mm)	Departure (%)
Otavi	13.5	65.5	41.5	20	120.5	130	-7	394	270	46
Awagobibtal	24	29	37	24	90	127	-29	361	293	23
Erwee	1	0	8	8	9	36	-75	91	66	38
Anker	11	0	0	11	11	52	-79	47.6	91	-48
Outjo	50.2	48.8	36.7	50.2	135.7	97	40	455.1	181	151
Fransfontein	2	14	23.5	14	39.5	58	-32	113.5	104	9
Gam	4	19	39	20	62	97	-36	308	227	36
Khorixas	0.7	0	17.8	16	18.5	46	-60	81.3	86	-5
Okamatapati	0	23.5	0	20	23.5	106	-78	248.3	215	15
Omatjenne	13.6	13.7	83.2	35.4	110.5	55	101	259.6	199	30
Otjiwarongo	11.2	5.2	31.2	12	47.6	55	-13	208.4	206	1
Ronesterkop	3	4	45	31	52	56	-7	130	105	24
Morewag	0	0	2.1	1.1	2.1	27	-92	9.1	58	-84
Eiseb	7	24	5.7	24	36.7	94	-61	232.9	225	4
LaPaloma	21.5	23.1	25.2	24	69.8	103	-32	236.8	215	10
Sorris Sorris	0	0	0.5	0.5	0.5	22	-98	15	47	-68
Okondjatu	1.8	15.9	12.5	8	30.2	105	-71	257.4	219	18
Ombona	5	11.6	58.9	28	75.5	95	-21	403.8	167	142
Omatjette	14	6.5	13	10.5	33.5	61	-45	70.8	104	-32
Eureka	8.9	41.6	18.4	21.6	68.9	98	-30	197.4	206	-4
Rodenbeck	29.7	16.7	7.3	20.2	53.7	95	-43	172.9	211	-18
Omaruru	1.7	23.8	23	16.5	48.5	62	-22	200.4	107	87
Tubusis	18.3	0.2	9.5	16	28	38	-26	76	64	19
Ondunduwazirap i	3	24.5	11	13.5	38.5	92	-58	229	202	13
Spitzkoppe	0	0	0	0	0	19	-100	25	46	-46
Omateva	5	9	0	5.5	14	79	-82	295.6	173	71
Westenfallenhof	10.3	36.5	36.9	32	83.7	73	15	162.3	126	29
Wlotzkasbaken	0.5	0.1	0.2	0.4	0.8	24	-97	2.5	77	-97
Pioniers Park	2.6	15.6	26.1	15.6	44.3	91	-51	221.1	158	40
Otjimbingwe	0	10.6	1.7	10.6	12.3	42	-71	105.5	64	65
Bergvlug	3.1	20.6	37	27.5	60.7	80	-24	216.6	154	41
Windhoek	14.2	6.4	37.6	18.8	58.2	86	-32	233.4	156	50
Binsenheim	0	7	15.5	5	22.5	80	-72	161	155	4
Walvis Bay	0	0	0	0	0	0	0	1	0	0
Kleinberg	0.1	0	0.1	0.1	0.2	3	-93	0.6	11	-95
Roosand	0	0	4.7	4.6	4.7	11	-57	29.1	62	-53
Rehoboth Town Council	0	7	5	5	12	58	-79	82.3	97	-15



Station	01-10 Jan 2026	11-20 Jan 2026	21-31 Jan 2026	Highest Daily Falls (mm)	Month Total (mm)	Normal (mm)	Departure (%)	Oct 2025 – January 2026 Relative Performance		
								Total (mm)	Normal (mm)	Departure (%)
Coridor13	0	0	0	0	0	60	-100	146.3	146	0
Olifantwater	0	3.2	15	13	0	55	-100	113.9	111	3
Rheinpfalz	6.5	14.2	10.0	12.0	30.7	60.0	-48.8	188.5	109.0	72.9
Gomchanas	1.9	52.3	15.5	46	69.7	46	52	188.7	92	105
Mariental	0	0	5.5	5.5	5.5	42	-87	143.4	75	91
Maltahohe	0	0	0	0	0	23	-100	21.5	46	-53
Gochas	0	7.5	0	7.5	7.5	42	-82	116.5	94	24
Gibeon	6	0	15.2	7	21.2	30	-29	65.1	61	7
Aruab	0	0.6	7.6	5	8.2	29	-72	56.8	49	16
Gellap Ost	0.8	1.8	2.1	1.8	4.7	13	-64	41.6	52	-20
Keetmanshoop	0	13.2	0	13.2	13.2	26	-49	73.7	55	34
Luderitz Airport	0	0	0	0	0	6	-100	0	26	-100
Aroab	0	0	5	5	5	36	-86	127.2	74	72
Naos_Karas	2.5	0	12.5	10.5	15	33	-55	98.5	74	33
Snyriver-Noord	0	0	0	0	0	22	-100	57.5	55	5
Karios AWS	0	0.1	0	0.1	0.1	7	-99	16.9	34	-50
Karasburg	0	5	0	5	5	17	-71	18.9	45	-58
Ariamsvlei	0	0	0	0	0	15	-100	0	43	-100
Oranjemund	0	0	0	0	0	12	-100	2.8	23	-88